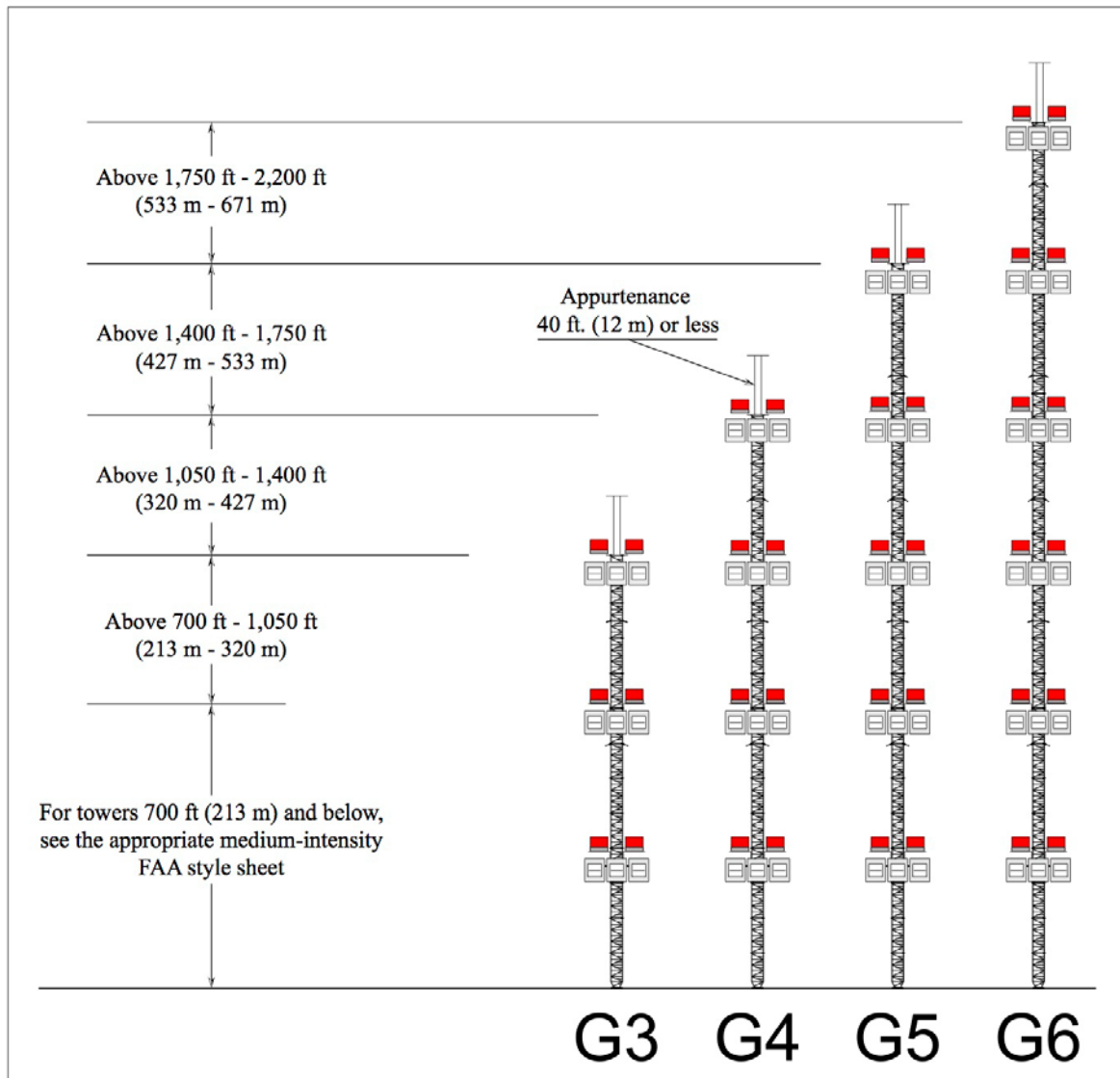




## HIGH-INTENSITY DUAL OBSTRUCTION LIGHT STANDARDS (FAA STYLE G)

STRUCTURE WITH APPURTENANCE 40 ft (12 m) OR LESS

Day Protection = 270,000 cd White Light  
Twilight Protection = 20,000 cd White Light  
Night Protection = 2,000 cd Red Light



-  = L-856 (Flashing White Light)  
(3 flash heads required per level for 360° coverage)
-  = L-864 (Flashing Red Light)  
Configured to flash at a rate of 30 fpm (± 3 fpm)

Source: AC 70/7460-1L - Obstruction Marking and Lighting