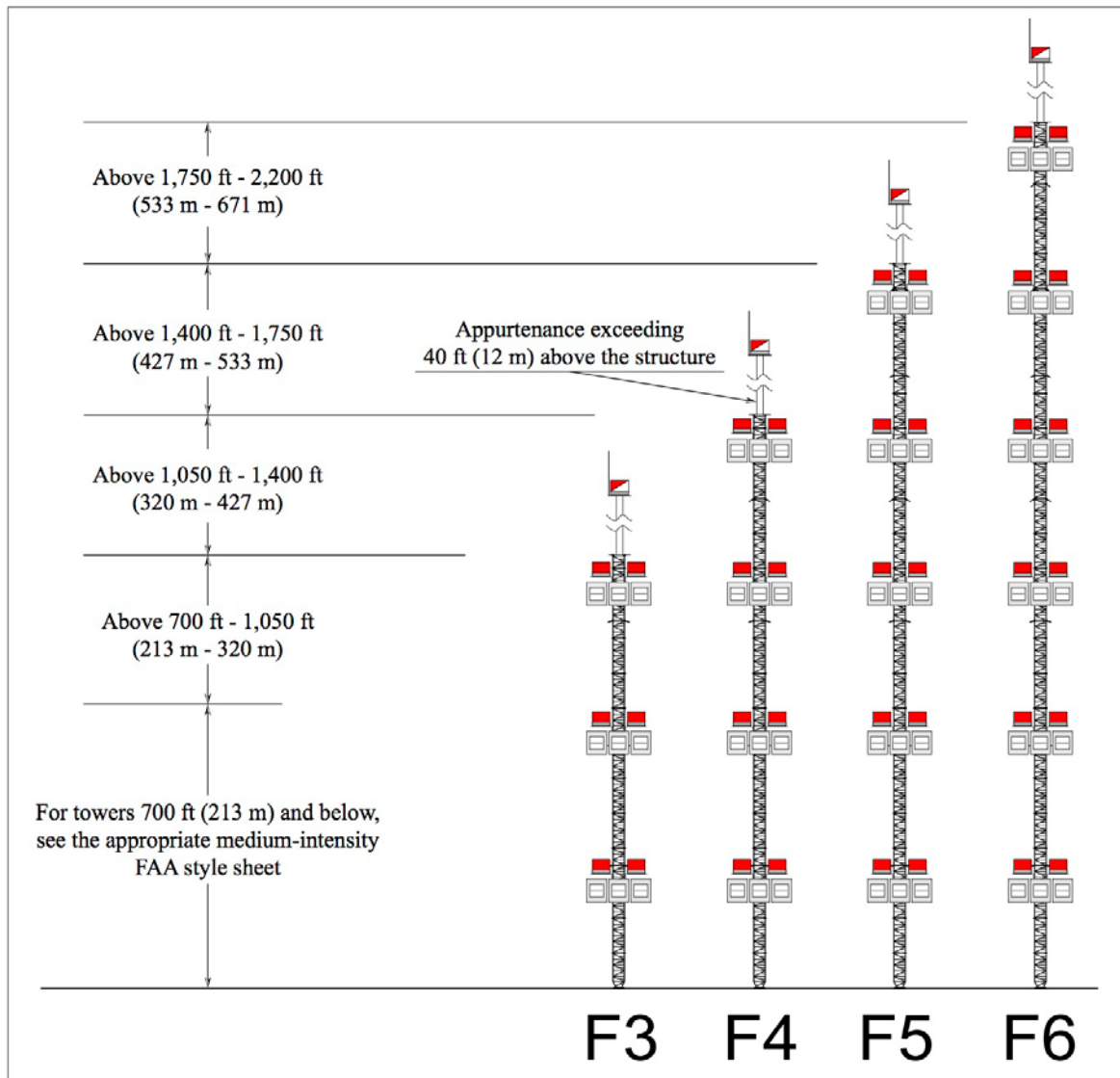




## HIGH-INTENSITY DUAL OBSTRUCTION LIGHT STANDARDS (FAA STYLE F)


STRUCTURE WITH APPURTENANCE GREATER THAN 40 ft (12 m)

Day Protection = 270,000 cd White Light  
 Twilight Protection = 20,000 cd White Light  
 Night Protection = 2,000 cd Red Light



 = L-856 (Flashing White Light)  
 (3 flash heads required per level for 360° coverage)

 = L-864 / L-865 (Flashing Dual [Red / White] Light)  
 L-864 configured to flash at a rate of 30 fpm (± 3 fpm)

 = L-864 (Flashing Red Light)  
 Configured to flash at a rate of 30 fpm (± 3 fpm)

Source: AC 70/7460-1L - Obstruction Marking and Lighting