



Flight Light Inc.
2708 47th Ave.
Sacramento, California, U.S.A.
95822-3806



PH (916) 394-2800 FX (916) 394-2809
TF (800) 806-3548 EM info@flightlight.com

FlashGuard
Lightning/Surge Protection Devices
Hughey & Phillips

FlashGuard™ Lightning/Surge Protection Devices LSPD 3000, LSPD 3000B & LSPD 3003

Description

LSPD devices are designed to protect FlashGuard™ medium intensity strobe lighting systems. The LSPD provides both a grounding solution and surge suppression for these installations.

LSPDs minimize exposure to lightning damage through tower light wiring, a lightning path that is commonly overlooked at communications sites. Without the use of a LSPD, the interconnecting cable between the strobe's flashhead and the power supply provides a direct path that can allow damaging surges and transients to enter the shelter.

Sites with the LSPD installed have proven reliability. Sites with previous lightning problems have recorded hundreds of lightning strikes after LSPD installation, with no damage to the power supply or communication equipment.

Specifications

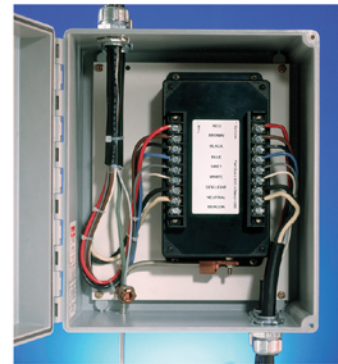
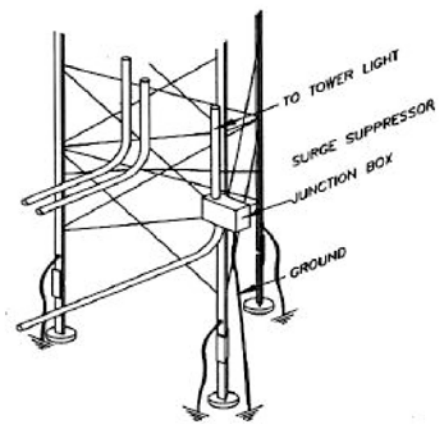
Response Time: Less than 5 μ s.
Current Withstand: 40 kA per mode. IEEE
C62.41 8x20 μ s short
circuit waveform.

Circuitry: LSPDs are series wired with parallel protection. Robust MOVs protect all circuits. A large ground plane bonded to a #2 copper ground lug provides a strong electrical/mechanical discharge point.

LSPD Model Numbers

AC strobes, FlashGuard 3000 & 2000
LSPD-3000B for single flashhead installations

DC strobes, FlashGuard 3003 & 2003
LSPD-3003 43D, for single flashhead installations



Installation

LSPD units are installed between the flashhead and the power supply, providing protection for both the lighting power supply *and* the telecommunications equipment installed at the site.

The LSPD units are supplied in a NEMA 4X outdoor enclosure. The protectors should be mounted on the tower above the ice bridge, before the cable turns to enter the shelter. The first level of protection forces any induced voltage on the cable's shield to tower ground. All lines then pass through a surge suppression device before continuing to the power supply.

Detailed installation instructions are included with each unit and should be adhered to for optimum protection. If requested, we will provide installation instructions for the model you are considering in advance.

Visit our web site: www.flightlight.com



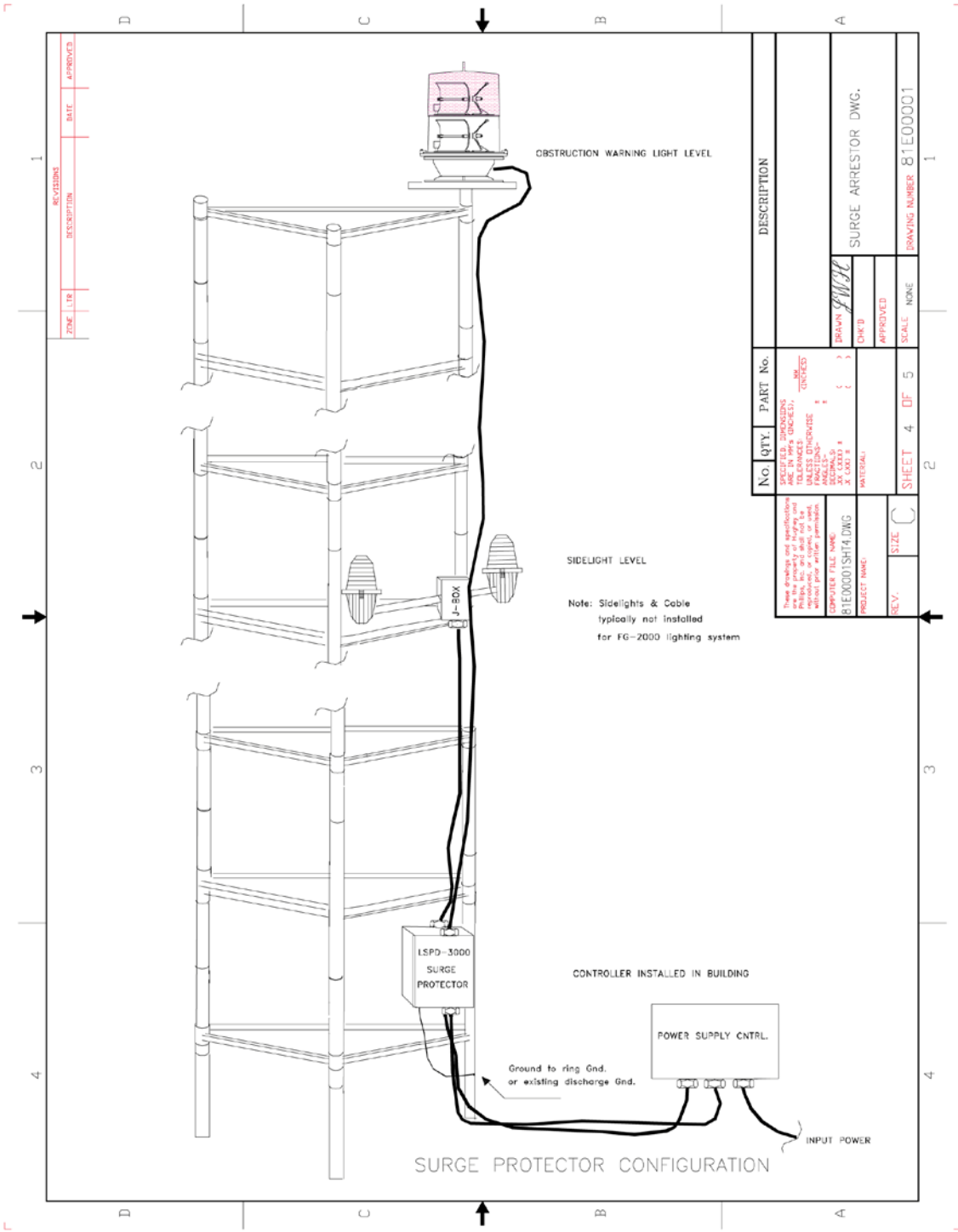
Flight Light Inc.
 2708 47th Ave.
 Sacramento, California, U.S.A.
 95822-3806



PH (916) 394-2800
 TF (800) 806-3548

FX (916) 394-2809
 EM info@flightlight.com

FlashGuard
Lightning/Surge Protection Devices
Hughey & Phillips



No.	QTY.	PART No.	DESCRIPTION
			SURGE ARRESTOR DWG.
<small> These drawings and specifications are for the use of the customer only. They are not to be used for any other purpose without the prior written permission of Flight Light Inc. All dimensions are in inches unless otherwise specified. Tolerances are as noted. All materials are to be of standard commercial grade unless otherwise specified. All work is to be in accordance with the applicable codes and standards. All work is to be done in accordance with the applicable codes and standards. All work is to be done in accordance with the applicable codes and standards. </small>			
<small> DRAWN BY: [Signature] CHECKED BY: [Signature] APPROVED BY: [Signature] </small>			
<small> PROJECT NAME: BTE0001SHTA.DWG SHEET 4 OF 5 SCALE: NONE DRAWING NUMBER: BTE00001 </small>			

Visit our web site: www.flightlight.com