



Flight Light Inc.
2708 47th Ave.
Sacramento, California, U.S.A.
95822-3806



PH (916) 394-2800 FX (916) 394-2809
TF (800) 806-3548 EM info@flightlight.com

1500 Watt Isolation Transformer for Airport Approach Lighting FAA L-830

Compliance and Applications

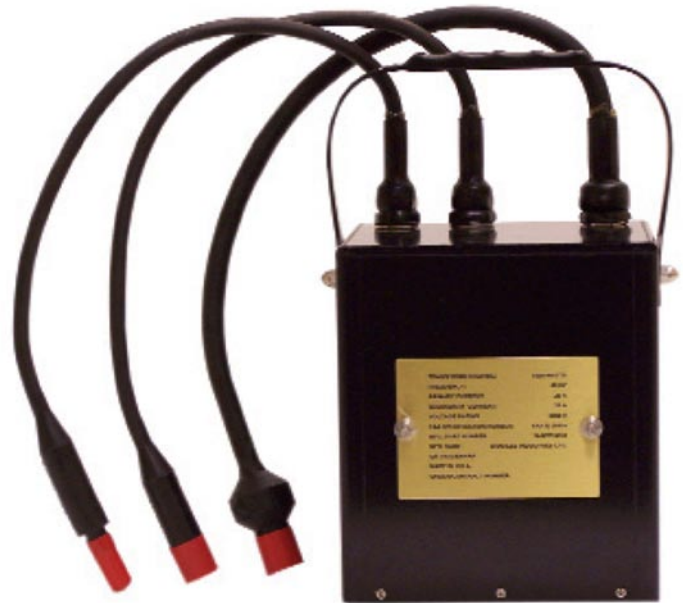
FAA: L-830, AC 150/5345-47

Our 1500 watt isolation transformers are used by airports worldwide to isolate high operating voltage for constant operation of approach lighting used on airport runways. Made in the U.S.A., our transformers are built to the highest quality testing which includes visual inspection, ratio testing and HIPOT testing. Fully ETL accepted and FAA approved.

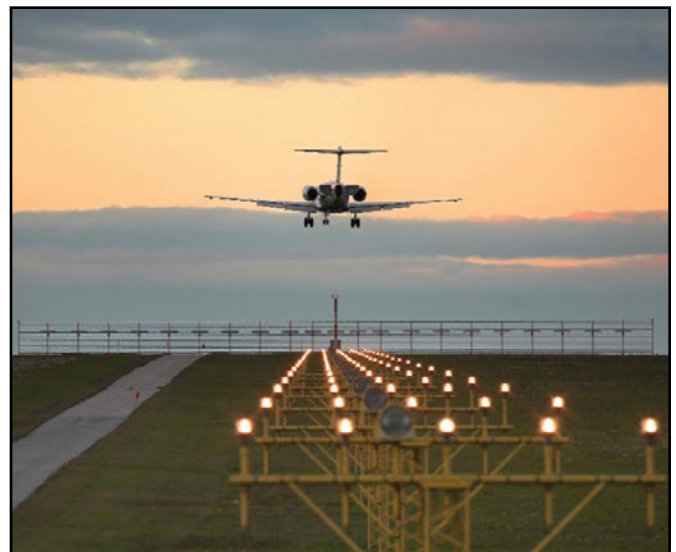
Encapsulated in an aluminum case and designed to operate efficiently while submerged in water, our transformers are approved to operate between -67° F (-55° C) to 185° F (+70° C) and can be installed above ground or direct buried.

Features

- Passes NBP ALSF-2 lamp out power line carrier monitoring system signal
- Meets FAA-E-2690A up to 1800 watts to allow for power lost in wiring
- Quick connections consist of molded L-823 plugs and receptacles. Primary Side: Style 2 plug and Style 9 receptacle with 10 AWG, 5000 volt lead wire. Secondary Side: Two pin Style 8 receptacle with 12 AWG, 600 volt lead wire. All leads are 24.0"
- Attached lifting handle
- Meets 15KVDC insulation resistance requirements of FAA-E-269A
- Manufactured in the USA.



Part Number TR-TT116-1



Visit our web site: www.flightlight.com



Flight Light Inc.
2708 47th Ave.
Sacramento, California, U.S.A.
95822-3806



PH (916) 394-2800 FX (916) 394-2809
TF (800) 806-3548 EM info@flightlight.com

**1500 Watt Isolation Transformer
for Airport Approach Lighting
FAA L-830**

Electrical Performance	
Capacity	1800 Watts
Primary Current	20 AMPS
Power Factor	0.90 Minimum
Efficiency	95% Minimum
Frequency	60 Hertz
Secondary	20.0 AMPS +/- 0.2 AMPS Full Load
Secondary	22 AMPS Maximum Short Circuited Current
Primary Voltage	845.5 Volts to Peak with Secondary Open Circuited
Primary HIPOT	5000 Volts RMS
Secondary HIPOT	600 Volts RMS
Operating Temperature	-67° F (-55° C) to 185° F (+70° C)

Mechanical Performance	
Width	8.00 inches (20.32 cm)
Depth	7.50 inches (19.1 cm)
Height	9.00 inches (22.9 cm)
Diagonal	10.50 inches (26.7 cm)
Weight	62 lbs (28 kg)

Note: Dimensions are for transformer body (excluding leads and handle).

Visit our web site: www.flightlight.com