



Flight Light Inc.  
2708 47th Ave.  
Sacramento, California, U.S.A.  
95822-3806  
www.flightlight.com  
sales@flightlight.com

+1.800.806.3548  
+1.916.394.2800

Flight Light/atg airports (formerly ALSTOM)  
ZA489 Series High Intensity  
Inset Lights For Stop Bar and  
Guard Light Applications:  
FAA Compliant: L852S and L852G

### Compliance and Applications

FAA Compliant: L-852S and L-852G  
(AC 150/ 5345-46B, AC 150/5340-28,  
AC 120-57A)

Stop bar lights and guard lights provide traffic control on taxiways intersecting an active runway and are required for all SMGCS operations under low visibility conditions.

### System Features with SmartSwitch and Transformer Switch Units

All of the power connectors on the TSU and SmartSwitch are L-823 plugs and sockets. The control cables are supplied either with bare ends, allowing crimped connections and heat shrink to be used, or with L-823 connectors, allowing extension cables to be used. This is specified at the time of ordering.

### Why Our ZA489-8 is Better

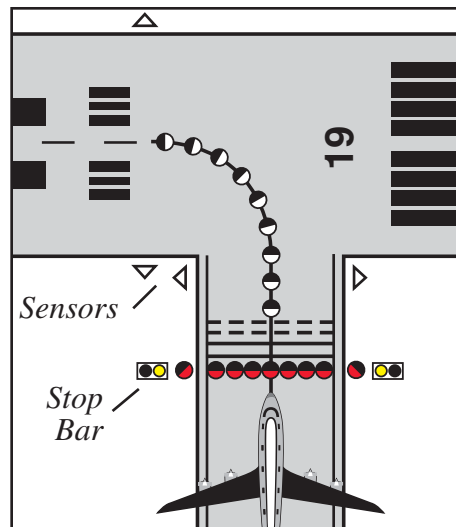
- ✓ The L-852S stop bar light is traffic signal red, and the L-852G guard light is traffic signal yellow, in accordance with ITE Standard for Vehicle Traffic Control Signal Heads.
- ✓ 8" sealed optical cartridge fits 12" adapter ring and is held with two stainless steel bolts for ease of maintenance.
- ✓ Lightweight and robust aluminum alloy construction.
- ✓ Prisms require no sealant.
- ✓ Pre-focused optics simplify maintenance.
- ✓ Pressure test plug ensures moisture-proof light cavity.
- ✓ Low profile: 0.47" (12mm) above grade.
- ✓ Long life halogen lamps: 3500 hours in normal use.
- ✓ L-852S and L-852G use interchangeable parts.

### Specifications (ZA489-8)

- 6.6A from 100W, or 200W isolating transformer. Uses 1@105W lamp.
- Powder coat finish in golden yellow or NATO green. Stainless steel fasteners.
- Fixture net weight 31 lb. (14kg). Gross weight 33 lb. (15kg). Carton size 12.7 in. x 12.7 in. x 5 in. (323mm x 323mm x 127mm).

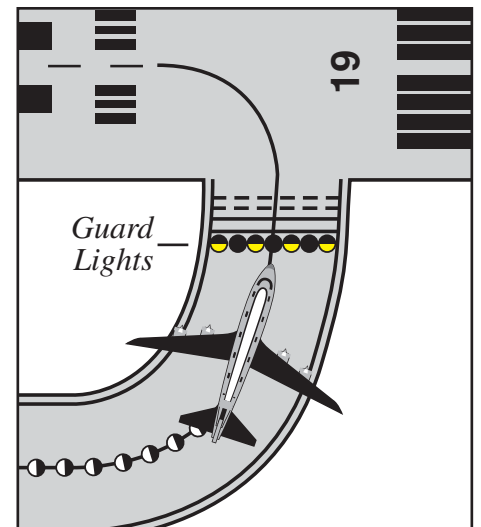


ZA489-8 Series unidirectional high intensity inset light.



### Stop Bar Configuration

A stop bar consists of a row of L-852S unidirectional in-pavement red lights that prohibits access to an active runway or taxiway. An elevated red light, L-862S, is set on each side of the taxiway at runway intersections. Stop bars are for low visibility operations.



### Guard Light Configuration

Runway guard lights, L-852G, are alternating yellow in-pavement lights that may be individually controlled and monitored to provide for all-weather operation protection against runway incursions.

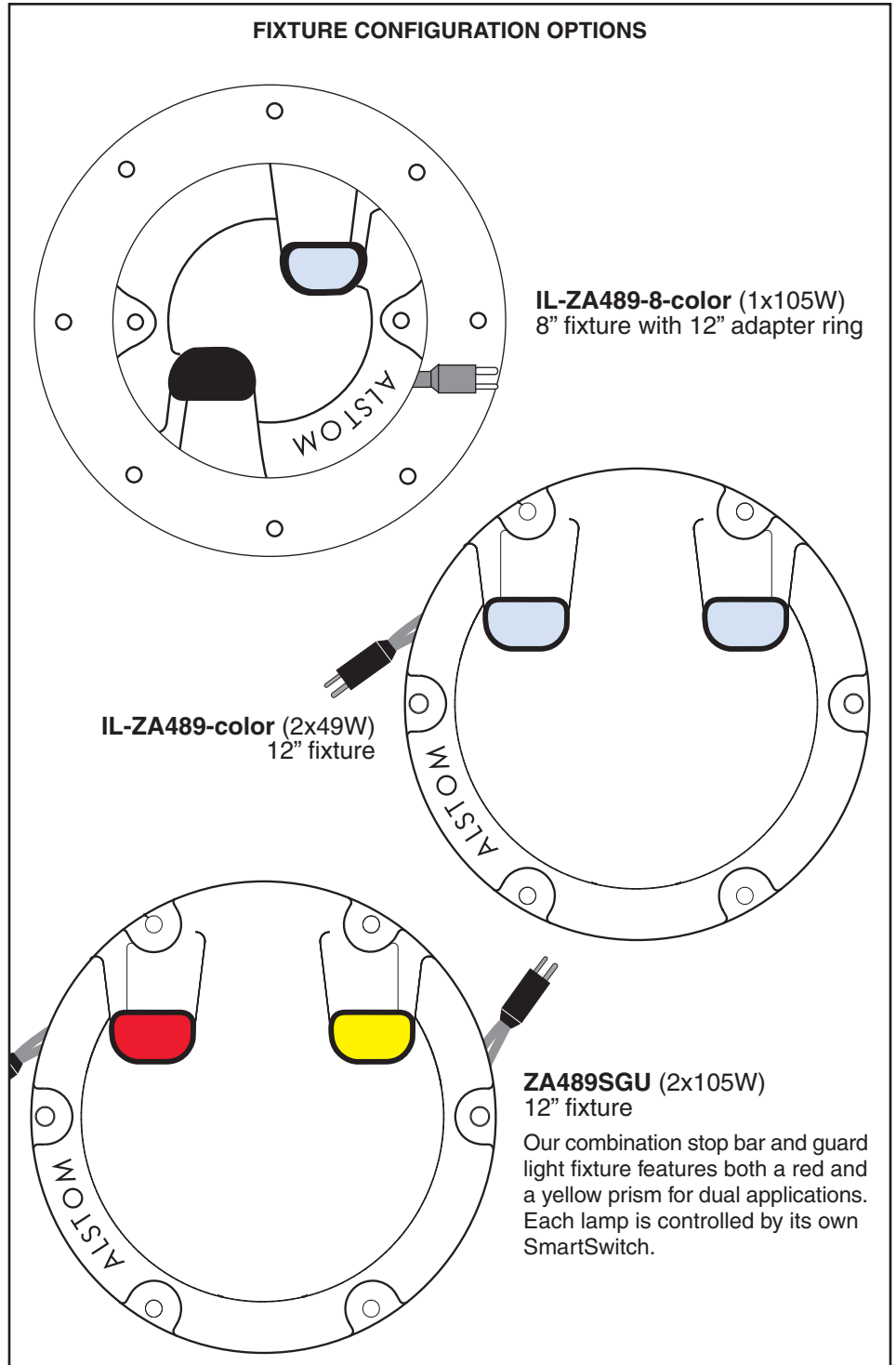
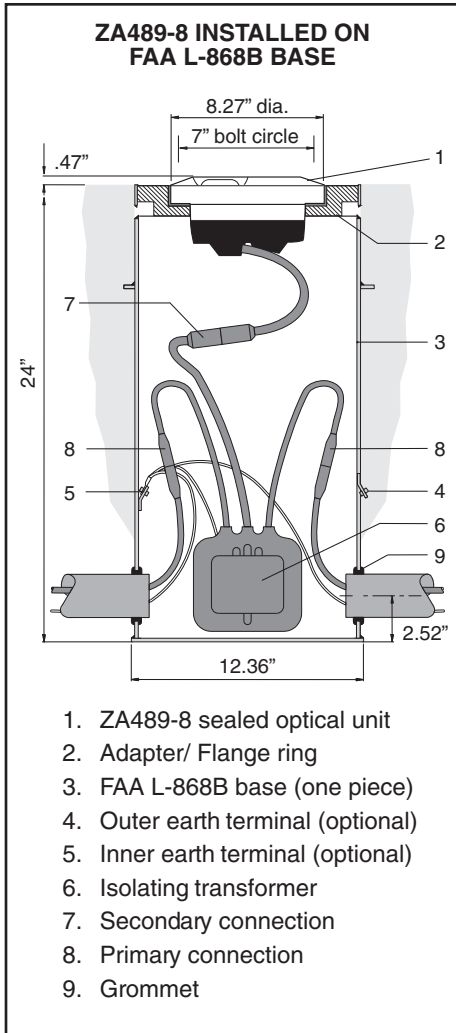
Visit our web site: [www.flightlight.com](http://www.flightlight.com)



Flight Light Inc.  
 2708 47th Ave.  
 Sacramento, California, U.S.A.  
 95822-3806  
 www.flightlight.com  
 sales@flightlight.com

Flight Light/atg airports (formerly ALSTOM)  
**ZA489 Series High Intensity  
 Inset Lights For Stop Bar and  
 Guard Light Applications:  
 FAA Compliant: L852S and L852G**

+1.800.806.3548  
 +1.916.394.2800



**Part Numbers for  
 Mounting on L868B Base:**

**L852G:**  
 IL-ZA489-8Y  
 IL-ZA489-Y

**L852S:**  
 IL-ZA489-8R  
 IL-ZA489-R

**L852G&S Combined:**  
 IL-ZA489-SGU

**Visit our web site: [www.flightlight.com](http://www.flightlight.com)**