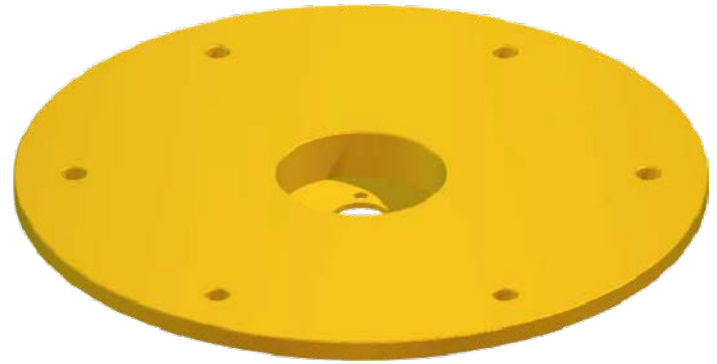


L-894 Standard Base Plate



Notes

1. ETL Certified L-894 Elevated Light Covers (FAA AC 150/5345-42)
 - Sizes: 12" L-867B & 16" L-867D
 - Ground required
2. Material: A36 Steel
3. Finish: Aviation yellow powder coat
4. (6) 7/16" Ø equally spaced, thru holes
5. Base plate shipped with:
 - Neoprene gasket:
 - 12" L-867B: BA-10530287
 - 16" L-867D: BA-10530281
 - For all except BA-1852: Hardware pack up #6120 which contains:
 - (1) 3 hole cable clamp (8089)
 - (3) #10-24 x 1-1/2" SS machine screws (10670781)
 - For BA-1852: Hardware pack up #6140 which contains:
 - (1) 4 hole cable clamp (8044)
 - (3) #10-24 x 1-1/2" SS machine screws (10670781)
6. Grounded version available (see p.K-01h)
Add "G" suffix to part number
7. Approved to support elevated guard lights
8. Multiple openings available.

Ordering Codes

Part #	Type	OD (mm)	BC (mm)	Tap (mm)
BA-1832*	12" L-867B	12" (304.8)	10.25" (260.4)	2" (50.8) NPS
BA-1835*	12" L-867B	12" (304.8)	10.25" (260.4)	1-1/2"-12 (38.1) NF
BA-1842	12" L-868B	12" (304.8)	11.25" (285.8)	2" (50.8) NPS
BA-1845	12" L-868B	12" (304.8)	11.25" (285.8)	1-1/2"-12 (38.1) NF
BA-1852	12" L-867B	12" (304.8)	10.25" (260.4)	2-1/2"-8 (63.5) NPSM
BA-2832*	16" L-867D	16" (406.4)	14.25" (362)	2" (50.8) NPS
BA-2835*	16" L-867D	16" (406.4)	14.25" (362)	1-1/2"-12 (38.1) NF

* FAA approved. Ground required for FAA approval. Add "G" suffix to part number.

