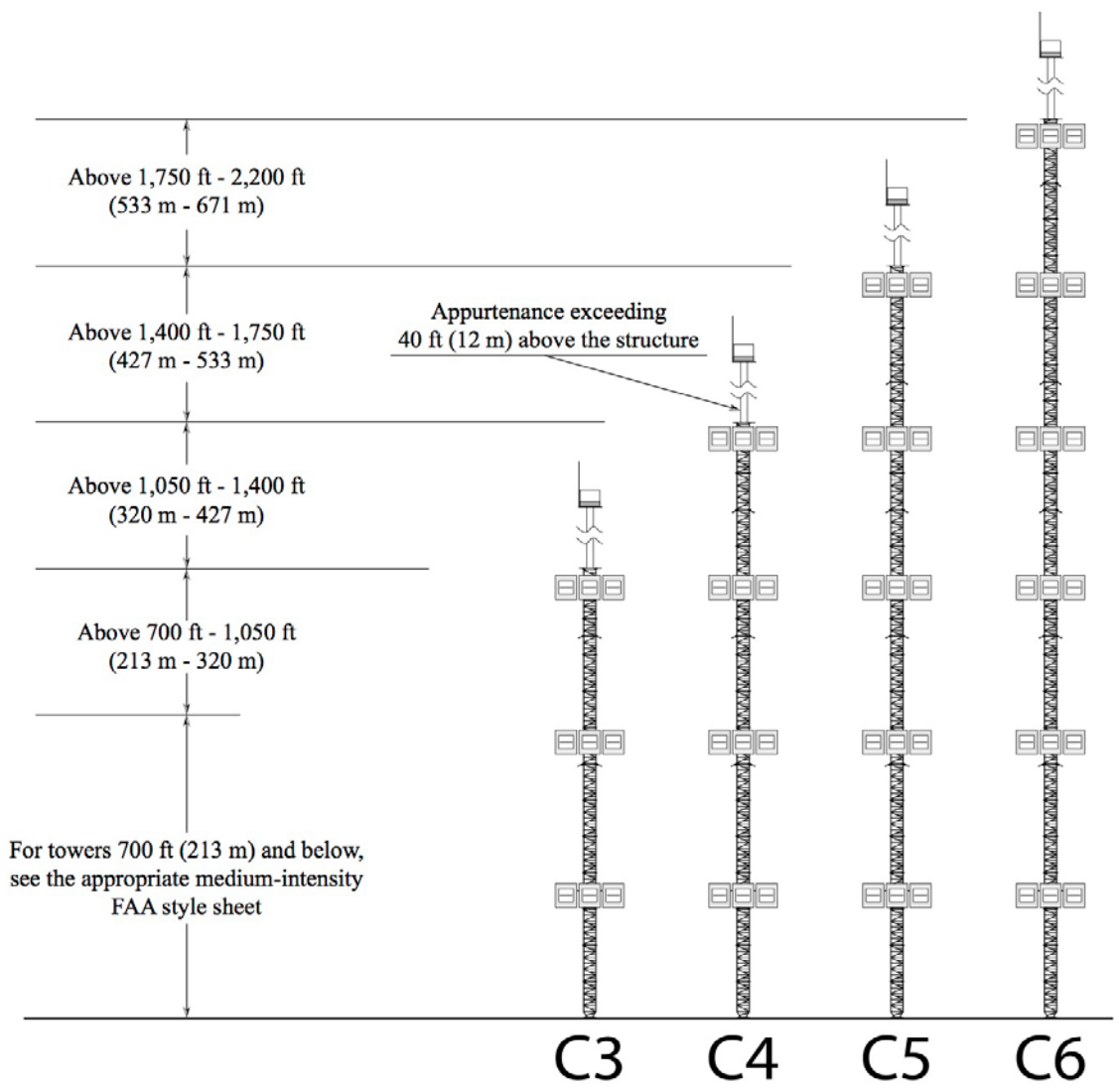




HIGH-INTENSITY WHITE OBSTRUCTION LIGHT STANDARDS (FAA STYLE C)

STRUCTURE WITH APPURTENANCE GREATER THAN 40 ft (12 m)

Day Protection = 270,000 cd White Light
Twilight Protection = 20,000 cd White Light
Night Protection = 2,000 cd White Light



-  = L-856 (Flashing White Light)
(3 flash heads required per level for 360° coverage)
-  = L-865 (Flashing White Light)

Source: AC 70/7460-1L - Obstruction Marking and Lighting