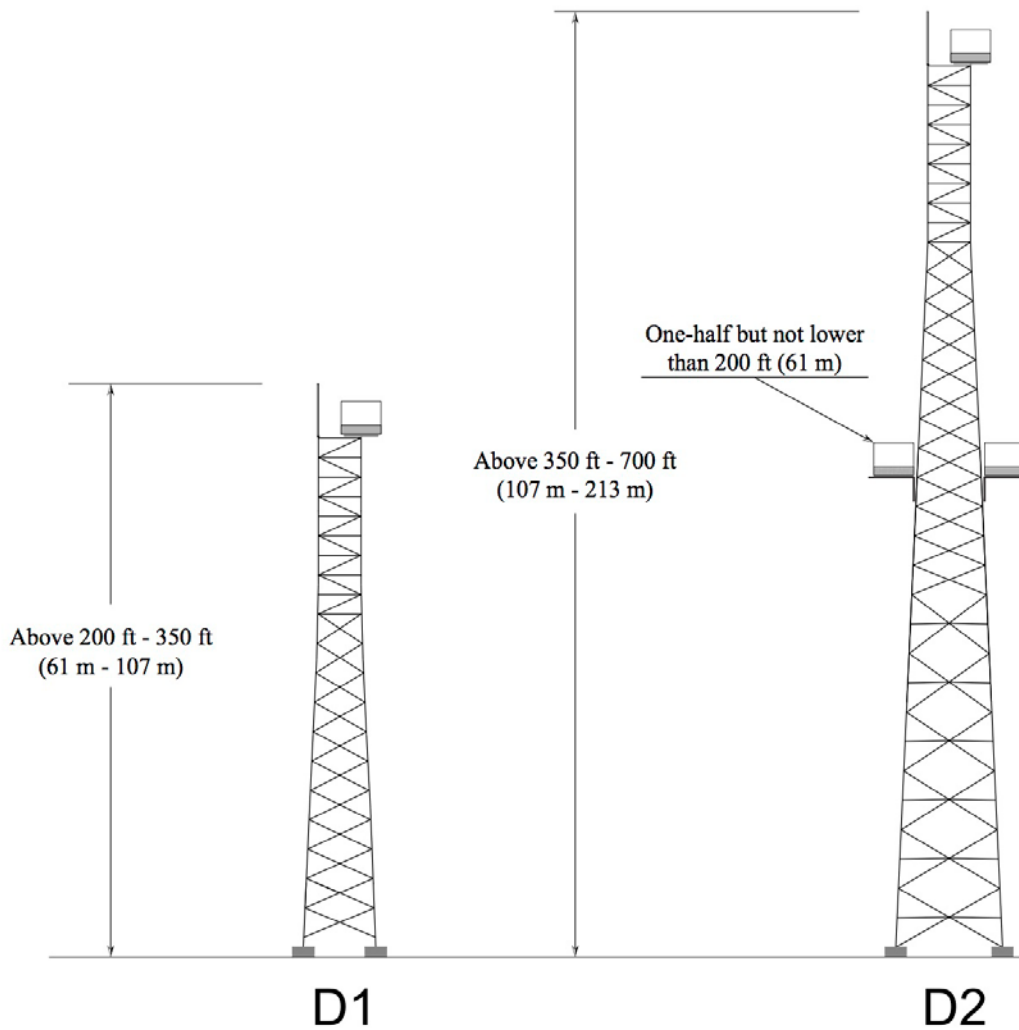



MEDIUM-INTENSITY WHITE OBSTRUCTION LIGHT STANDARDS (FAA STYLE D)

Day / Twilight Protection = 20,000 cd White Light
Night Protection = 2,000 cd White Light
(Painting of tower is typically not required)



 = L-865 (Flashing White Light)

Source: AC 70/7460-1L - Obstruction Marking and Lighting